



A newly completed apartment by Berkeley Homes located on the sought after Kennet Island development, situated to the south of Reading with excellent access to the M4 network and Green Park. The contemporary styled apartment located on the second floor features an open plan living room with laminate flooring and a well-fitted kitchen area with integrated appliances and further benefits from no onward chain. The impressive development features a central piazza with café, convenience store and gym with a dedicated bus service to central Reading with its mainline station providing direct trains to Paddington.

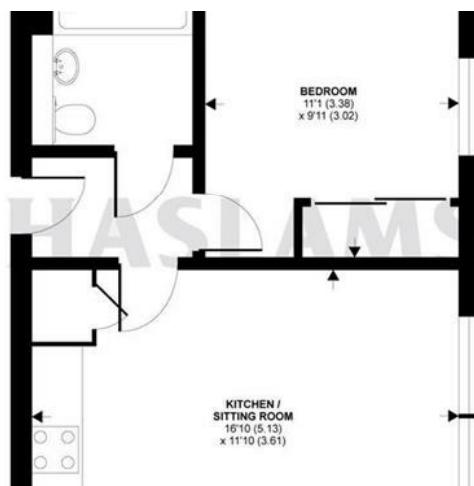
Interested? Please contact our sales team to find out more, or to book a viewing.

[sales@haslams.net](mailto:sales@haslams.net)  
0118 960 1000



- Well fitted kitchen area with integrated appliances
- Open plan living room overlooking communal grounds
- Impressive communal areas
- Bathroom with shower; EPC rating: B
- Allocated parking; Residents lift; Entry phone system
- One bedroom with built in wardrobe



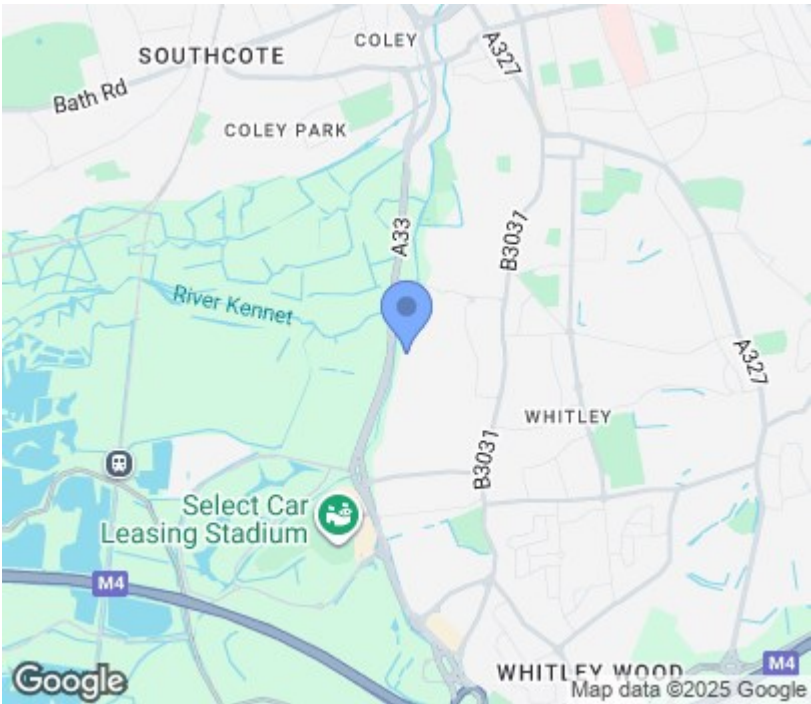


Council tax band

Council-

Additional information:





Please contact our sales team to find out more, or to book a viewing.

[sales@haslams.net](mailto:sales@haslams.net)  
0118 960 1000

Energy Efficiency Rating		
	Current	Potential
Very energy efficient - lower running costs		
(92 plus) A		
(81-91) B		
(69-80) C		
(55-68) D		
(39-54) E		
(21-38) F		
(1-20) G		
Not energy efficient - higher running costs		
England & Wales		EU Directive 2002/91/EC

These particulars, whilst believed to be accurate are set out as a general outline only for guidance and do not constitute any part of an offer or contract. Intending purchasers should not rely on them as statements of representation of fact, but must satisfy themselves by inspection or otherwise as to their accuracy. No person in this firms employment has the authority to make or give any representation or warranty in respect of the property.